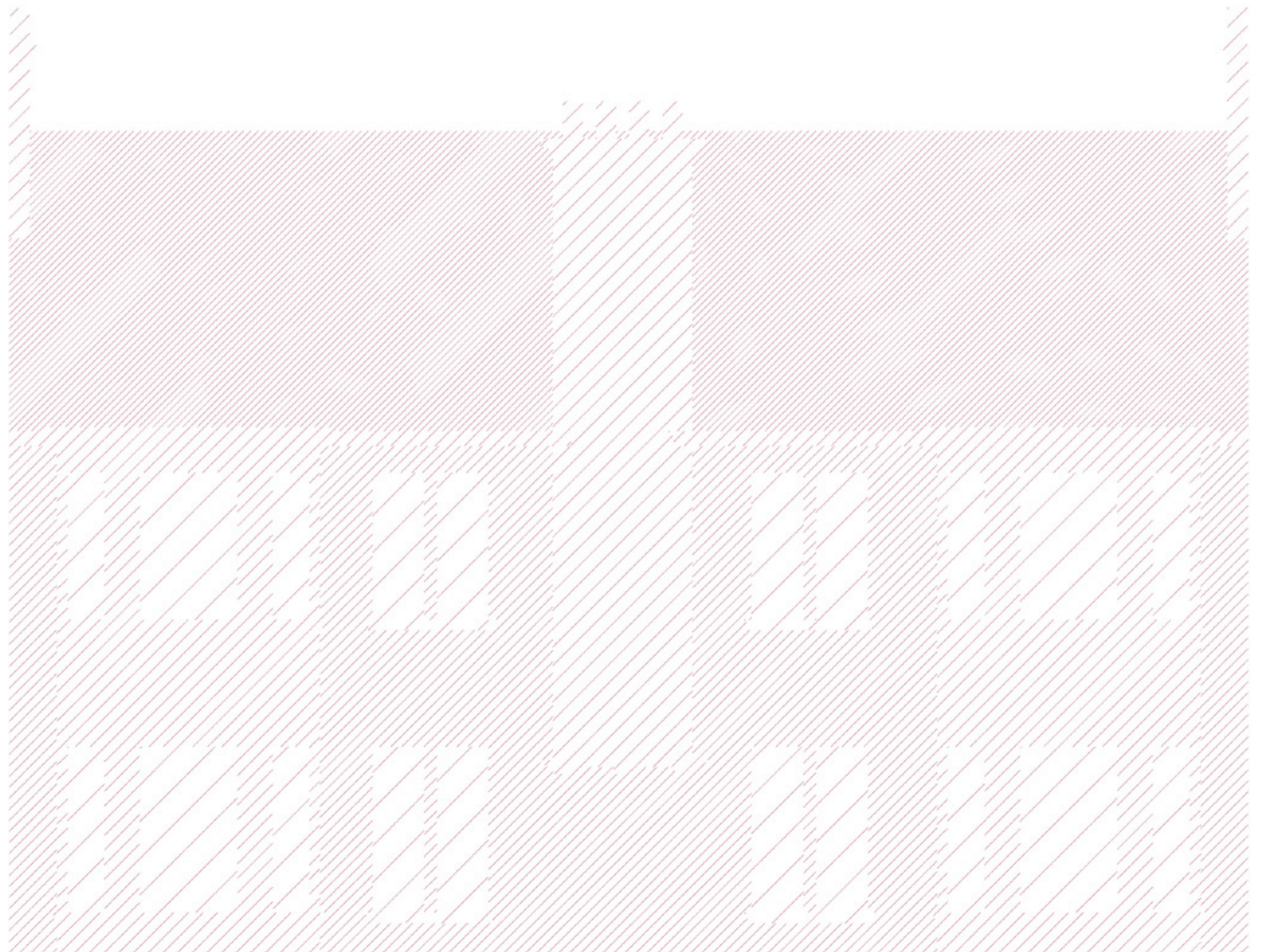




Typology Project:

Tenement

A Record of Buildings in Glasgow : **Volume One** : October 2011



Typology Project series
Volume One : **Tenement**

October 2011

ISSN : 2047-9247

Copyright © 2011
Dress for the Weather Limited

Printed on 100% Recycled Newsprint

Matt McKenna *Content*
Martin Thomson *Photography*
Dress for the Weather *Design + Publishing*
Newspaper Club *Printing*

Thanks:
Josepine Donachy : Chris Cochrane :
Andy Cheng : Gareth Jones

Support:
SUST

Dress for the Weather

info@dressfortheweather.co.uk
www.dressfortheweather.co.uk

The Typology Project is an exploration of existing building types in Glasgow. The intention is to highlight aspects of each of the typologies in an attempt to explore what makes them a distinctive part of Glasgow. A record of building types will also be compiled over the course of the project.

The work in this issue - '**Tenement**' - focuses on the robust nature of tenements and their ability to accommodate a wide demographic range. This has been done by, representing graphically, their prominence, variety, arrangement and also how they are occupied.

If you are interested in finding out more about the Typology Project or joining our mailing list please contact:
info@dressfortheweather.co.uk

Dress for the Weather



Typology Project: **Tenement**

Variations

Tenement Locations

Location, Concentration and Density

4

Block Pattern

Orientation, Shape and Length

6

Building Layout

Flat Size, Aspect and Circulation

7

Facade Aesthetic

Overall Block, Window Layout, Window Details, Material, Chimneys and Close Doors

8

Elements

Spaces

Road, Pavement, Front Garden, Close, Back Garden

10

Inside-Outside

Satellite, Chimney, Bay Window

12

Case Studies

Proportion

Size, Form, Scale

14

Usage

Occupation, Habitation and Function

16

Cosmetic

Alterations, Finishes and Durability

18

Variations

Tenement Locations

Glasgow Map : 1:50,000 : Location, Concentration and Density : 



Variations Block Pattern

Three Neighbourhoods : 1:2500 : Orientation, Shape and Length : 



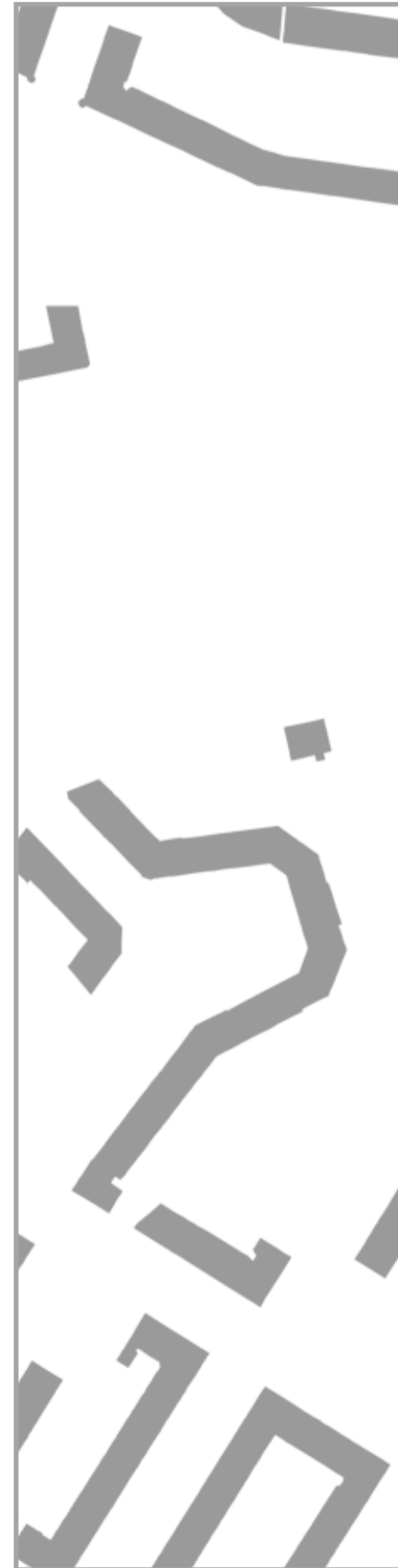
Govanhill :

Govanhill's block pattern follows existing features such as key routes, rail lines and landscape (such as hills and rivers). The blocks bend to fit in with these features. It seems as if they could wind on forever were it not for these features intervening.



Dennistoun :

Blocks in Dennistoun are set out in a strict grid pattern. The layout of the blocks doesn't take things like topography into consideration. The block halts abruptly when there is an obstacle (such as the rail line to the south or Cumbernauld Road to the East).



Kelvinbridge :

In Kelvinbridge there is significant interruption to the block pattern by the River Kelvin (similar to Govanhill) however on the south side of Great Western Road there is a very strict block layout (more like Dennistoun).

Variations Building Layout

Nine Buildings : 1:200 : Flat Size, Aspect and Circulation



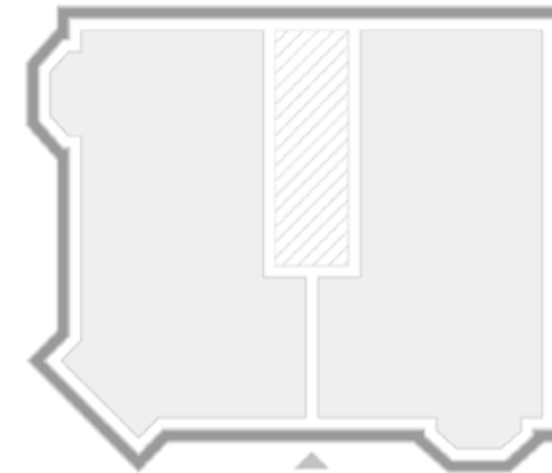
Block One:
Two Flats
Rear Staircase
No Bay Windows



Block Two:
Three Flats
Extended Rear Staircase
Bay Windows



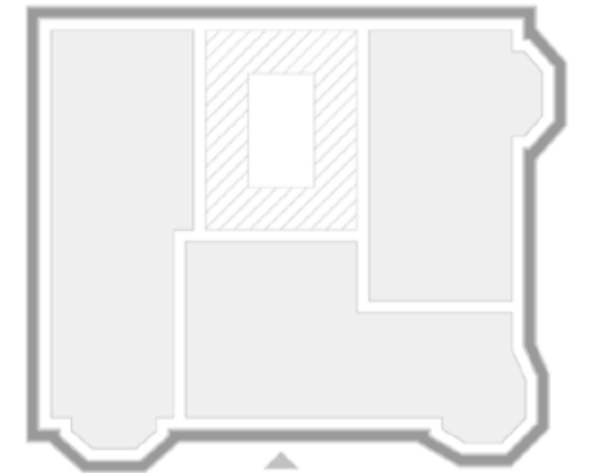
Block Three:
Two Flats
Front Staircase
Bay Windows Across Corner



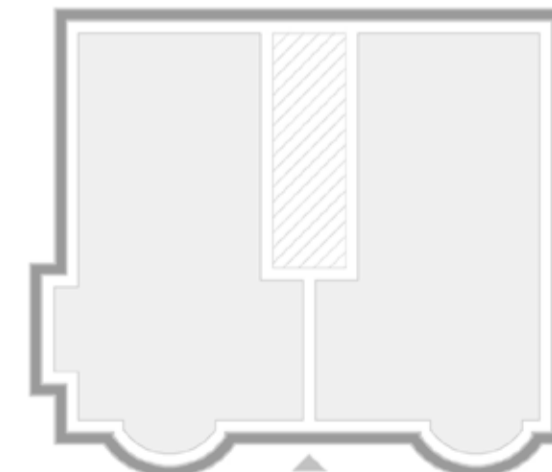
Block Four:
Two Flats
Rear Staircase
Bay Windows / Square Corner Bay



Block Five:
Two Flats
Front Staircase
Square Bay Windows



Block Six:
Three Flats
Rear Open Staircase
Bay Windows / Octagonal Corner Bay



Block Seven:
Two Flats
Rear Staircase
Rounded Bay / Rounded-Square Corner



Block Eight:
Two Flats
Rear Open Staircase
Bay Windows



Block Nine:
Two Flats
Extended Rear Staircase
Rounded Bay Windows

Variations Facade Aesthetic

Seven Blocks : Block, Window Layout, Window Details, Material, Chimneys and Close Doors



Govanhill

Pollokshields

Broomhill

Woodlands

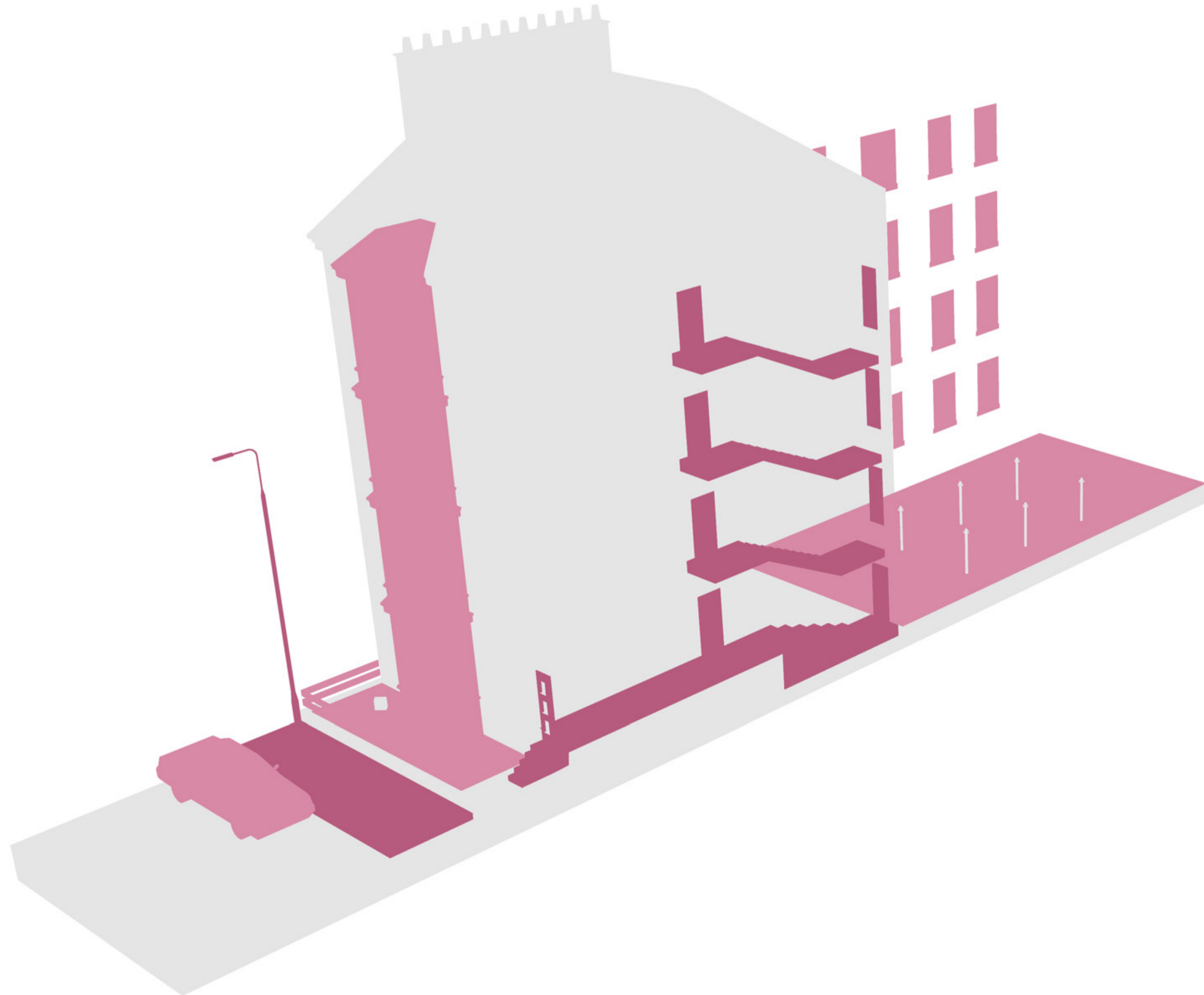
Shawlands

Govan

Saltmarket

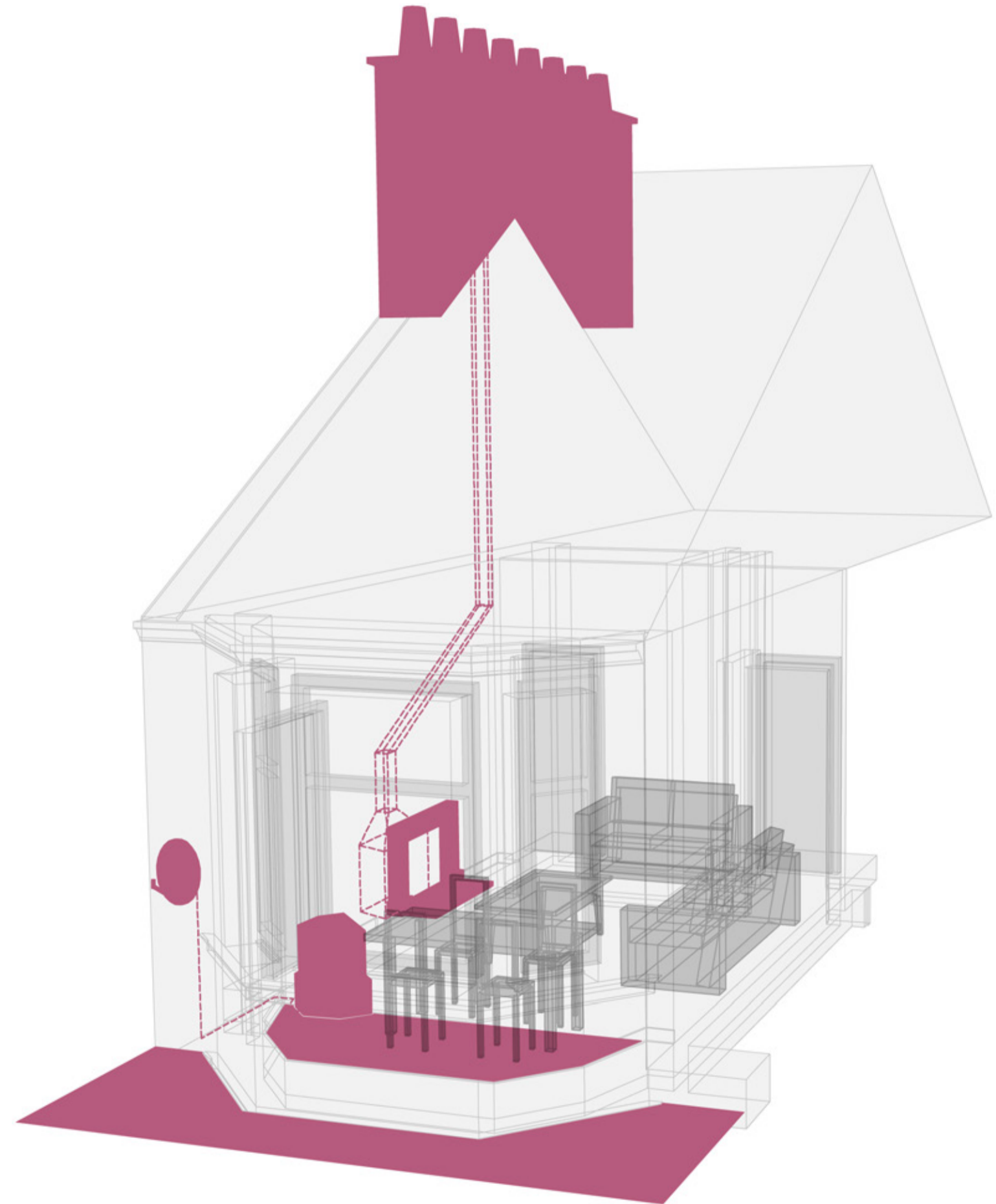
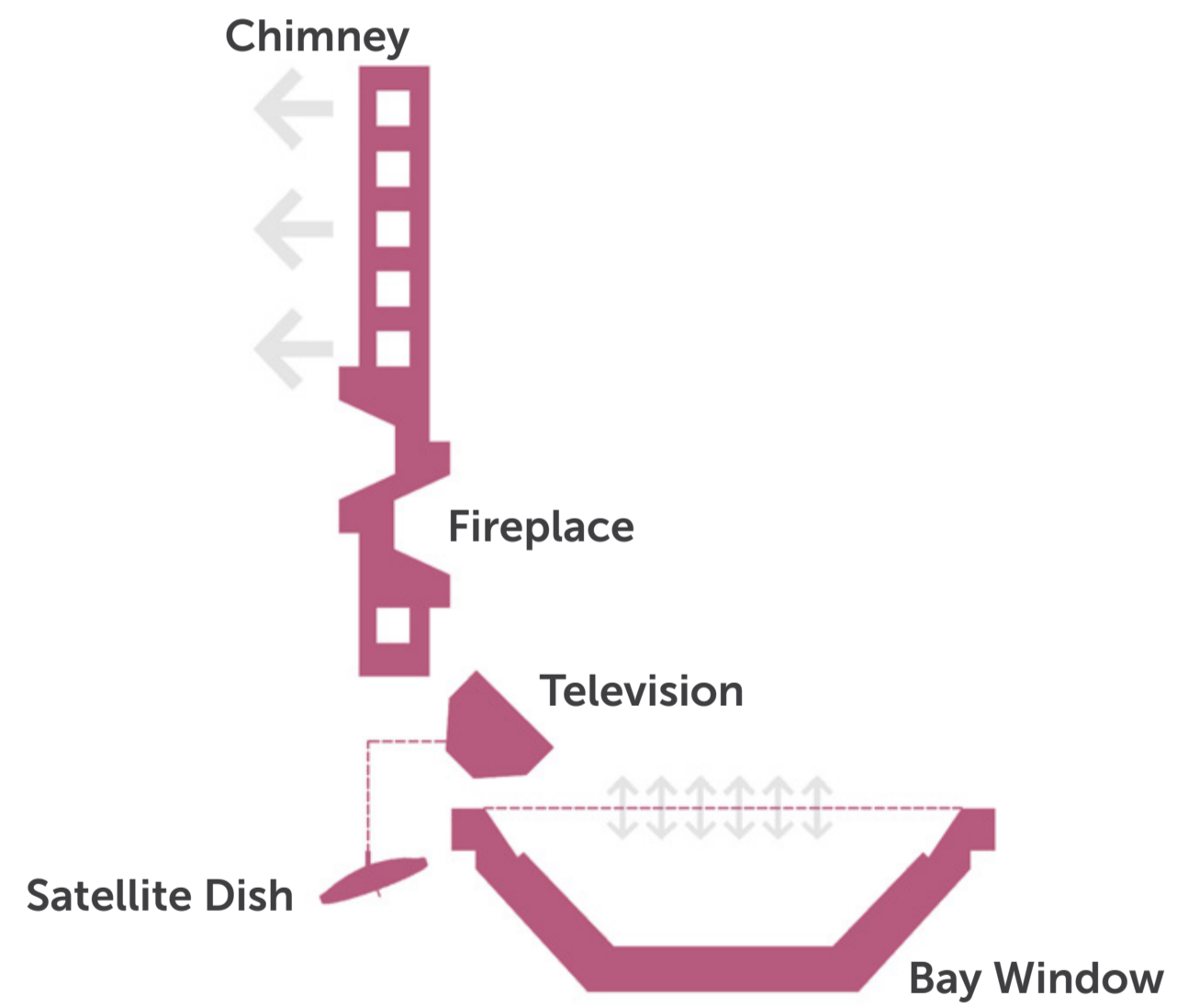
Elements Spaces

Public/Private Areas : 1:100 : Road, Pavement, Front Garden, Close, Back Court



Elements Inside - Outside

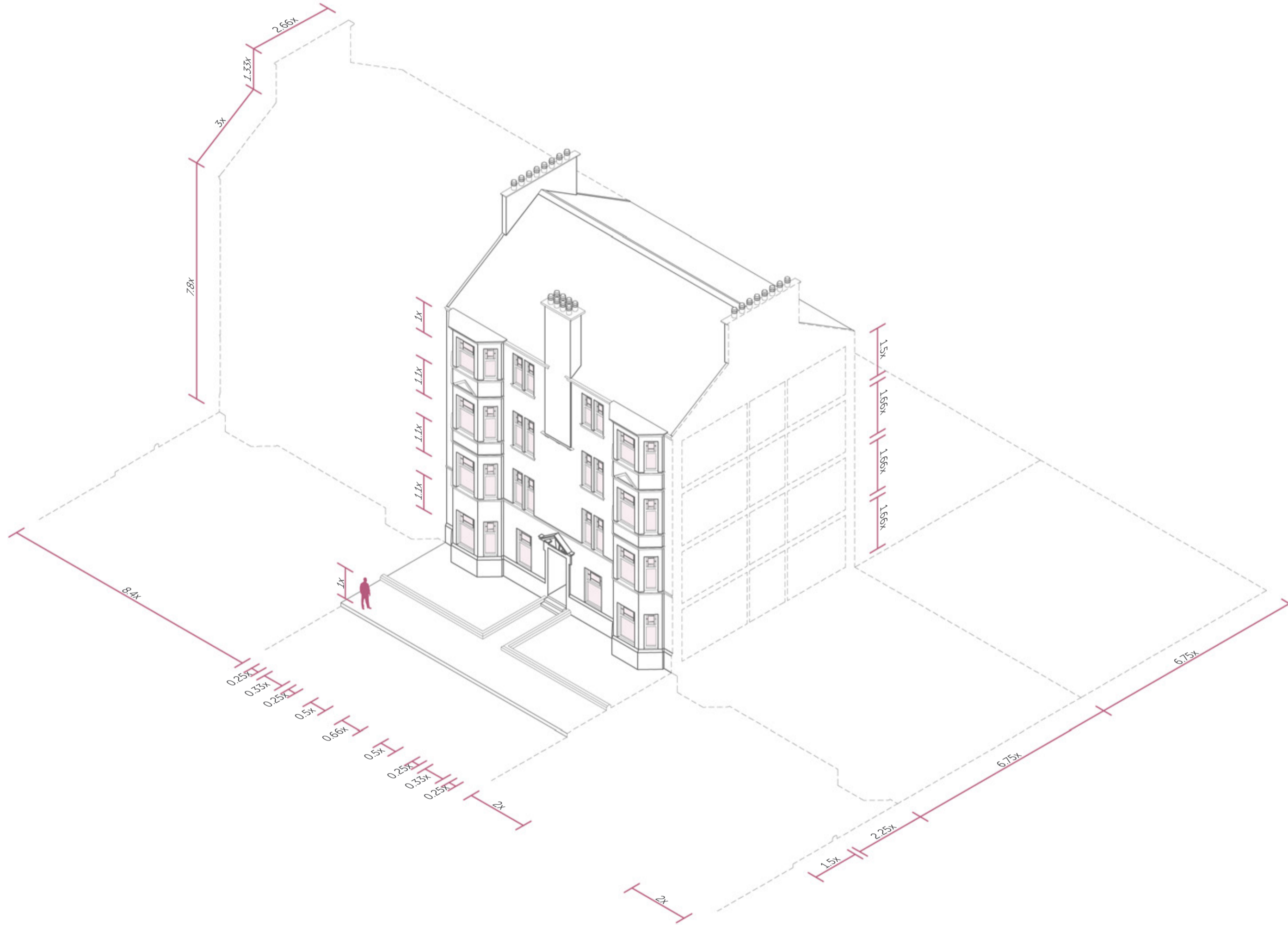
Spatial Relationships : 1:50 : Satellite, Chimney, Bay Window



Case Study

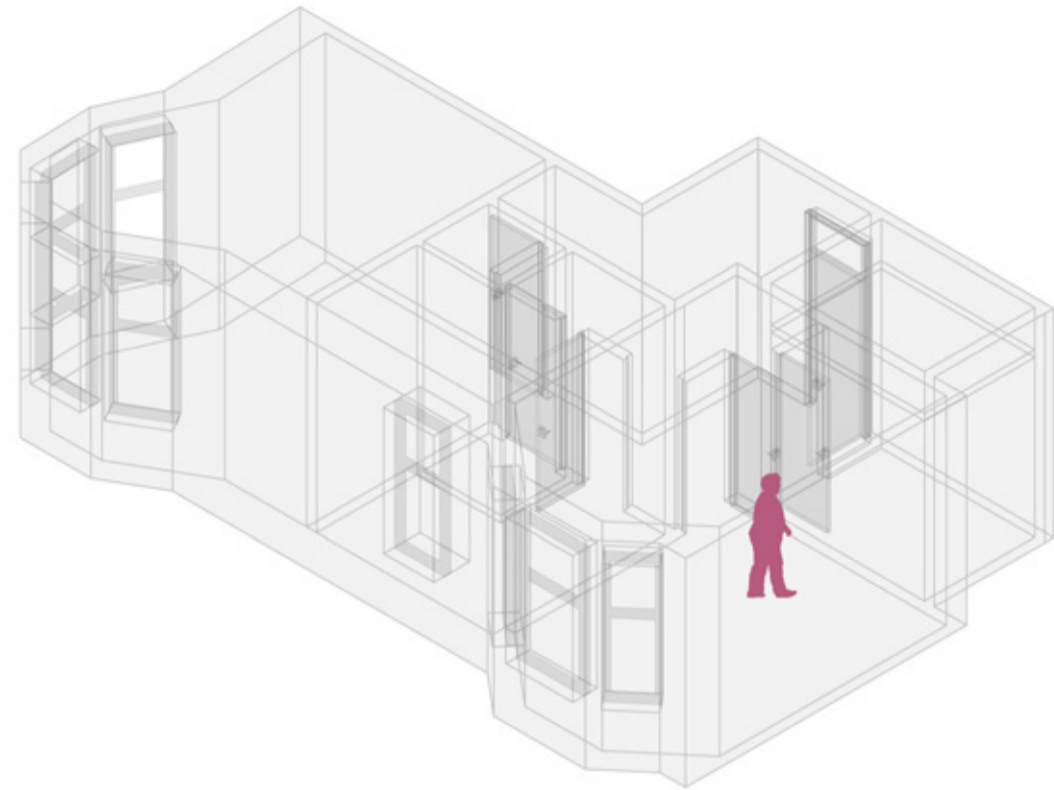
Proportion

Ingleby Drive, Dennistoun : 1:200 : Size, Form, Scale



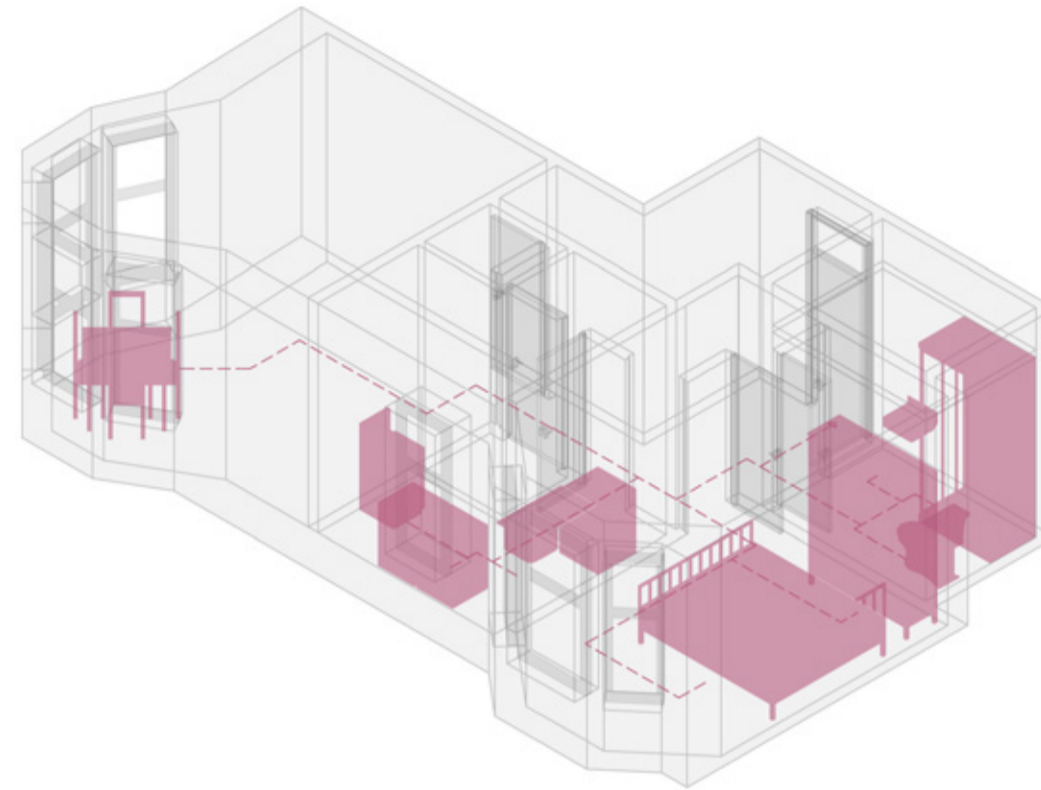
Case Study Usage

Aitken Street, Haghill : 1:100 : Occupation, Habitation and Function



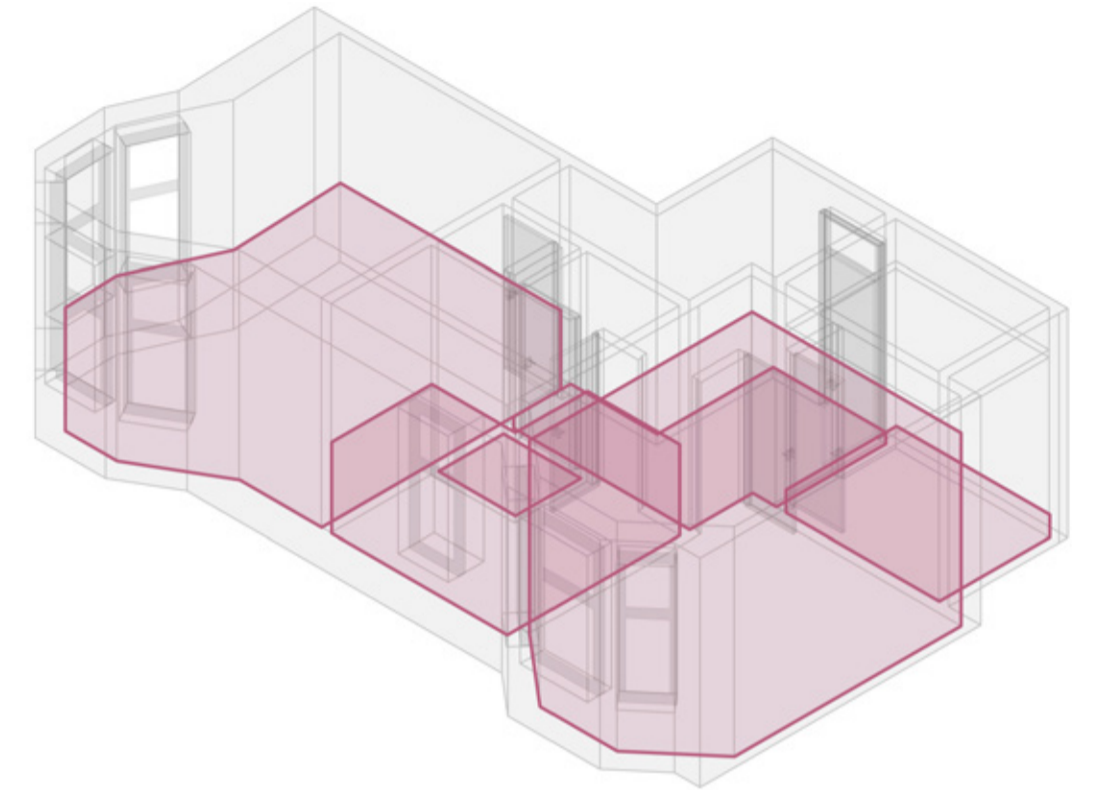
Occupancy

One person resides in the flat.



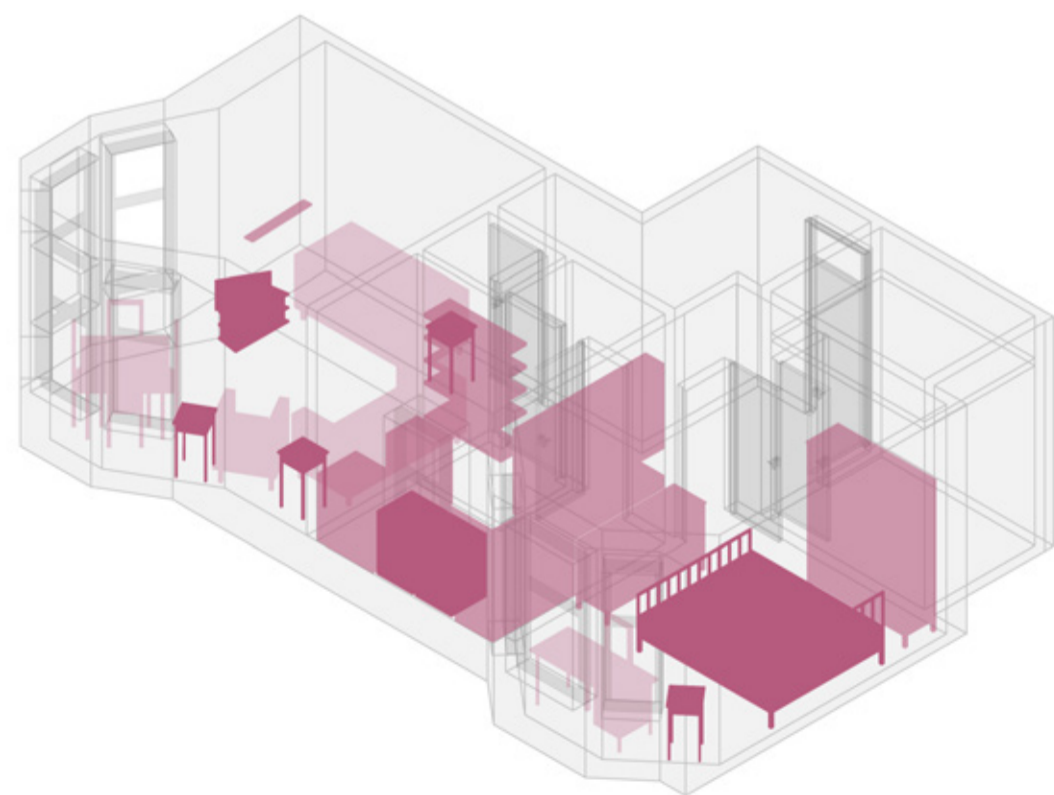
Morning Routine

I get up, empty my bladder, wash and shower, get dressed, make breakfast (eat it) then I get on with day.



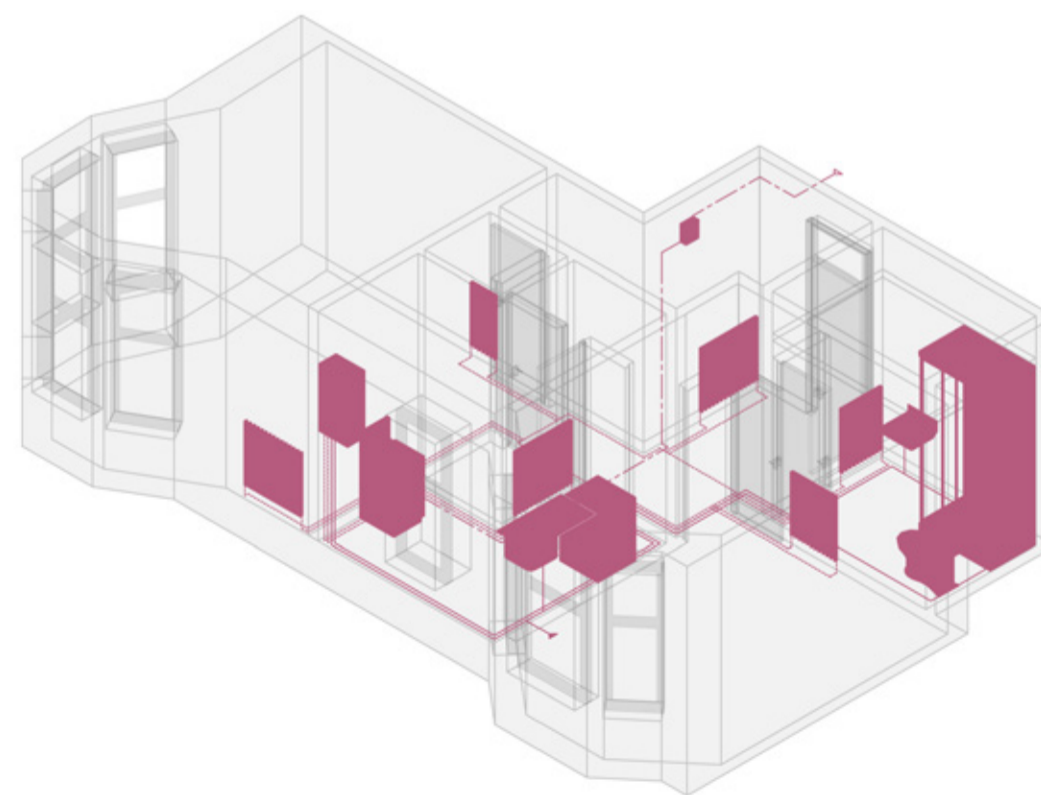
Time Spent in Each Room (per day)

Living Room: 3.5 hours Kitchen: 2 hours Cupboard: 0 hours
Hall: 0.5 hour Bathroom: 1 hour Bedroom: 8.5 hours



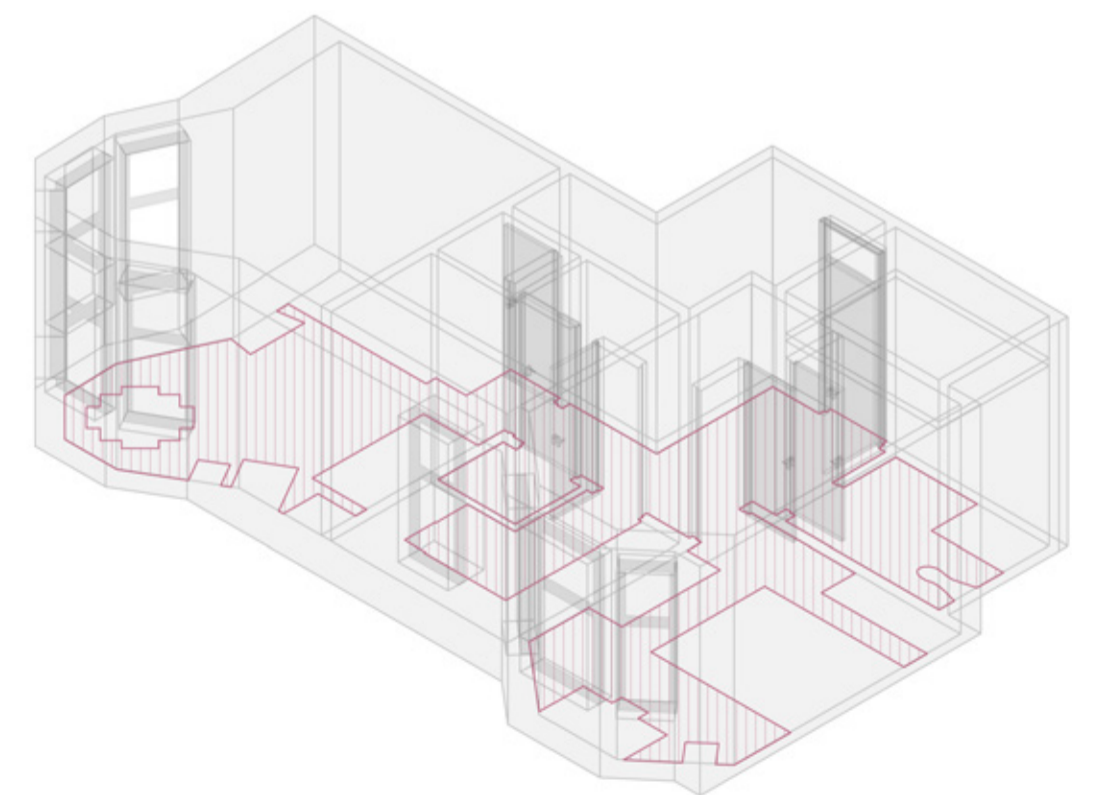
Furniture

Bed x 1	Dresser x 1	Wardrobe x 1
Dining table x 1	Side Tables x 4	Desk x 1
Sofas x 2	Television x 1	Chairs x 6



Services

Heating, Water, Gas.

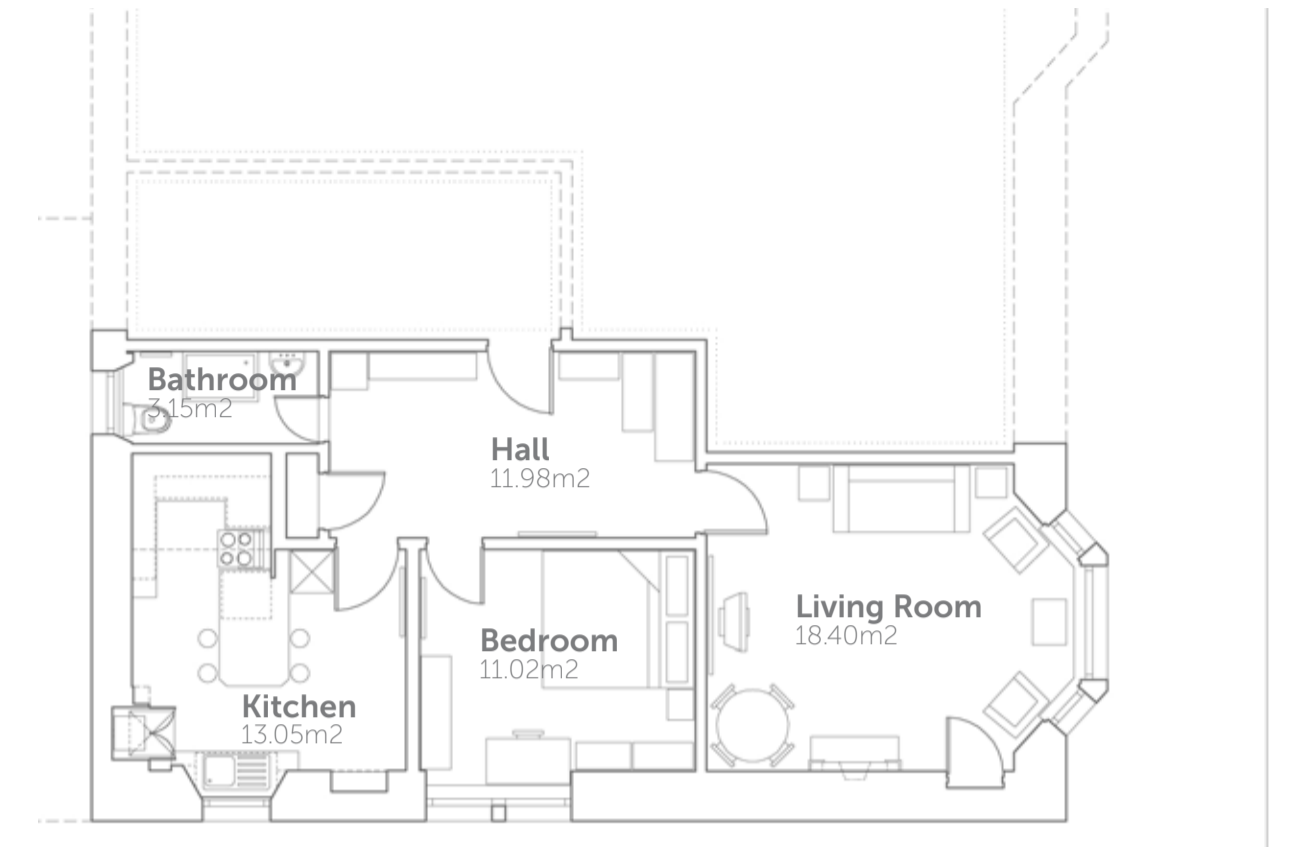


Circulation

The space left over.

Case Study Cosmetic

Pollokshaws Road, Shawlands : 1:60, 1:100 : Alterations, Finishes and Durability : 

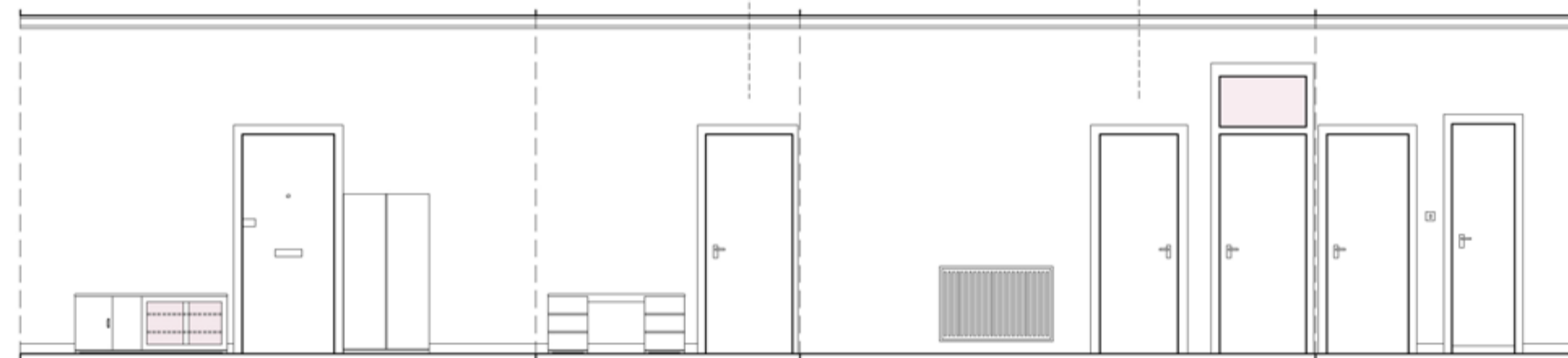


Floor Plan



Living Room

The living room has feature wallpaper across the bay window and wall opposite. The wallpaper has been painted in a striped pattern.



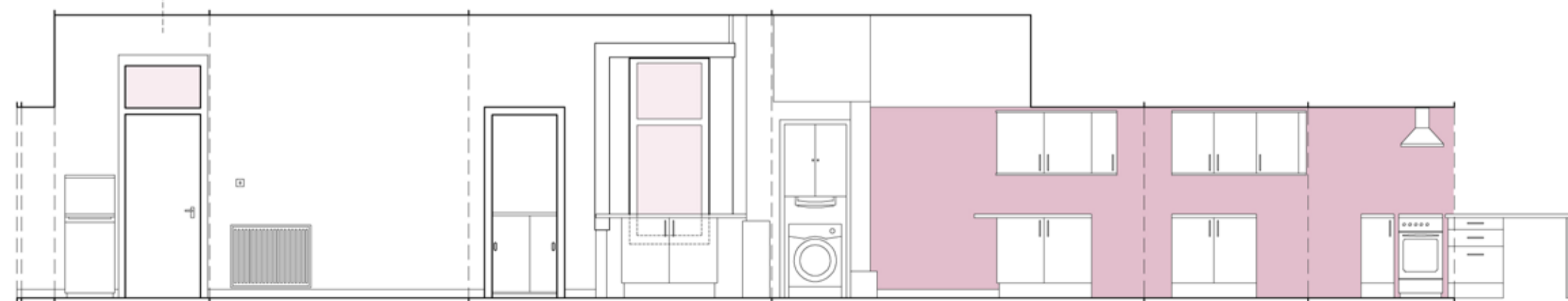
Hall

The hall contains a selection of 'acquired' furniture from various different sources.



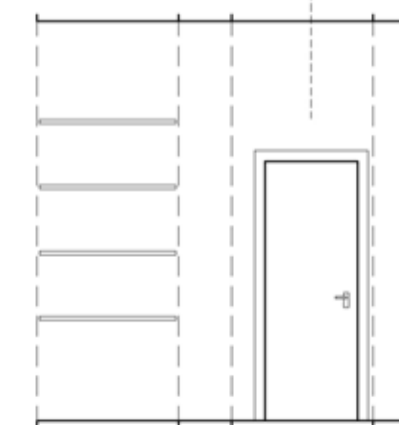
Bedroom

The bedroom walls are finished with a woodchip wallpaper.



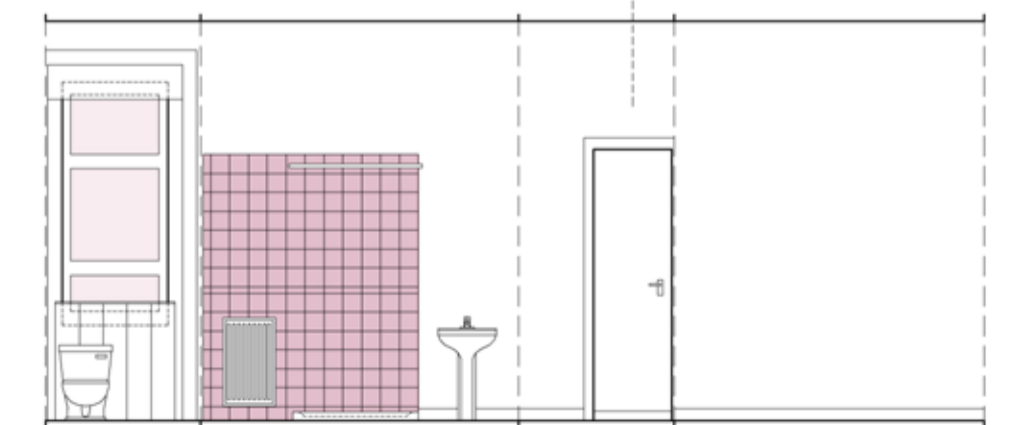
Kitchen

The kitchen is now in its fourth incarnation.



Cupboard

The cupboard was last decorated in the eighties.



Bathroom

The bathroom has a tiled portion to tie in with the shower area.

